

FLOOR PLANS + CAPACITIES

HAMILTON
CONVENTION
CENTRE
BY CARMEN'S

LEVEL ONE

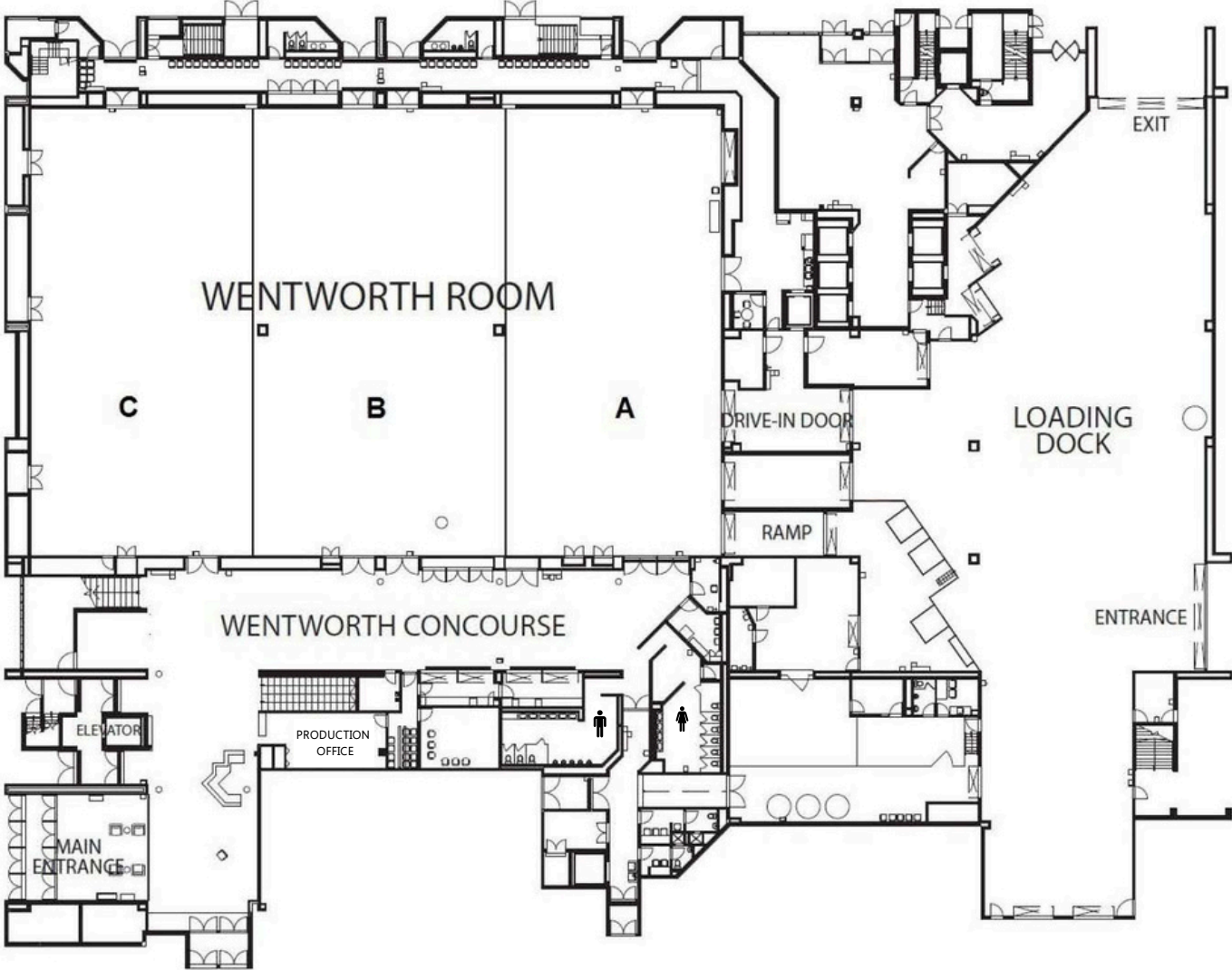
THE WENTWORTH HALL

Located at street level, offering as much as 20,000 sq. ft. of reinforced floor space making it the ideal choice for exhibits, tradeshow, dinners, receptions and large meetings. The Wentworth Hall is connected to a four bay loading dock and includes a large freight elevator capable of transporting vehicles to the second and third level. Move-in and move-out times are greatly reduced with access to the Wentworth Hall via two sources; direct ramp from the loading dock and a large drivethrough door.

LEVEL ONE ROOM CAPACITY + MEASUREMENTS

ROOM	MEASUREMENTS				MAX CAPACITY					
	IMPERIAL		METRIC		THEATRE	CLASS ROOM	10 x 10 BOOTHS	MILITARY	ROUNDS OF 10	DINNER + DANCE
	DIM. (FT)	SQ. FT.	DIM. (M)	SQ. M.						
Wentworth ABC + Concourse	174' x 113' x 22'	19,662	53.04 x 34.44 x 6.71	1826.66	1679	1250	93	1679	1040	1140
Wentworth A	54' x 113' x 22'	6102	16.46 x 34.44 x 6.71	566.89	545	384	28	545	320	280
Wentworth B	64' x 113' x 22'	7232	19.51 x 34.44 x 6.71	671.87	611	384	27	611	320	330
Wentworth C	56' x 113' x 22'	6328	17.07 x 34.44 x 6.71	587.89	523	384	28	523	320	280
Wentworth AB	118' x 113' x 22'	13,334	35.97 x 34.44 x 6.71	1238.77	1156	768	55	1156	900	650
Wentworth BC	120' x 113' x 22'	13,560	36.58 x 34.44 x 6.71	1259.77	1134	768	55	1134	900	700
Production Office	~31' x 15' x 10'	~465	~9.45 x 4.57 x 3.05	~465	~25	~10			~20	

LEVEL ONE FLOOR PLAN



LEVEL TWO

THE ALBION BALLROOM

Featuring 4,000 sq. ft. with divider walls that can separate into three concurrent break out areas, each with its own private entrance.

BREAK OUT ROOMS

Our second floor provides flexibility for meeting planners with the potential of eleven break out rooms.

ROOM 201

Ideally suited as a trade show/convention office. A large picture window overlooks the Wentworth Hall and provided a birdseye view of the space. Simply draw the curtains and the room is instantly converted into a tasteful private meeting area.

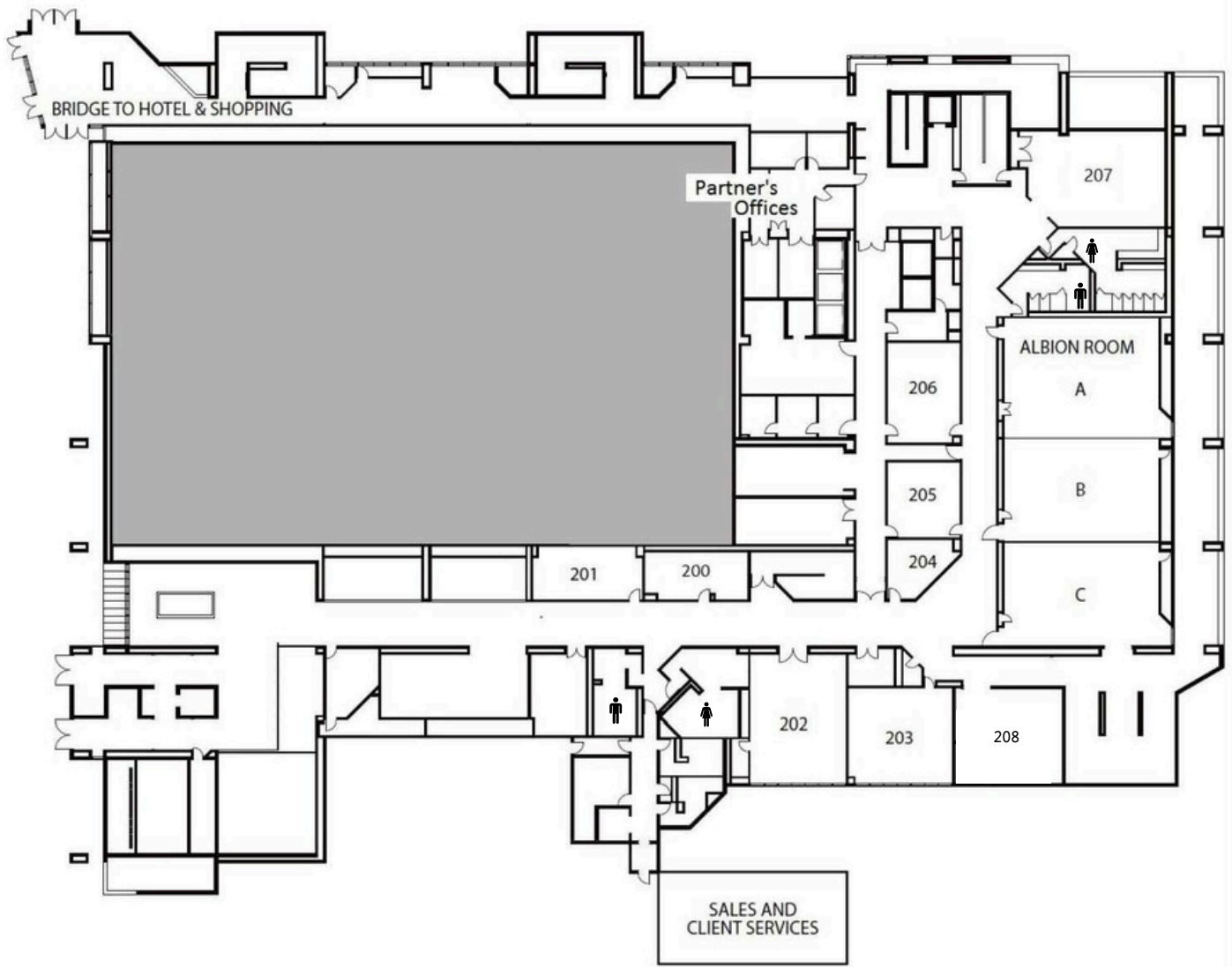
SPACIOUS CORRIDORS

Ideally situated throughout the second level, overlooking the grand foyer or the stunning cityscape, any of these areas can be converted into unique reception space.

LEVEL TWO ROOM CAPACITY + MEASUREMENTS

ROOM	MEASUREMENTS				MAX CAPACITY							
	IMPERIAL		METRIC		THEATRE	CLASS ROOM	HOLLOW SQUARE	U-SHAPE	BOARD ROOM	ROUNDS OF 10	DINNER + DANCE	
	DIM. (FT)	SQ. FT.	DIM. (M)	SQ. M.								
200	31' x 15' x 10'	465	9.45 x 4.57 x 3.05	43.20	31	30	20	18	18	20		
201	31' x 15' x 10'	465	9.45 x 4.57 x 3.05	43.20	40	30	20	18	18	20		
202	27' x 35' x 10'	945	8.23 x 10.67 x 3.05	87.80	80	50	30	33	24	50	40	
203	30' x 26' x 10'	780	9.14 x 7.92 x 3.05	72.46	63	45	32	18	12	20		
204					23				8	10		
205	20' x 21' x 10'	420	6.10 x 6.40 x 3.05	39.02	36	18	20	18	12	20		
206	20' x 28' x 10'	560	6.10 x 8.53 x 3.05	52.03	48				14			
207	26' x 36' 7 10"	936	7.92 x 10.97 x 2.39	86.96	62	50	30	24	24	40		
208	~30' x 26' x 10'	~780	~9.14 x 7.92 x 3.05	~72.46	~63	~45				~20		
Albion ABC	90' x 43' x 10'	3870	27.43 x 13.11 x 3.05	135.82	323	270				210	180	
Albion A	34' x 43' x 10'	1462	10.36 x 13.11 x 3.05	115.85	121	84	34	30	34	80		
Albion B	29' x 43' x 10'	1247	8.84 x 13.11 x 3.05	107.86	103	84	34	30	34	80		
Albion C	27' x 43' x 10'	1161	8.23 x 13.11 x 3.05	251.67	99	63	34	30	34	50		
Albion AB	63' x 43' x 10'	2709	19.20 x 13.11 x 3.05	223.71	224	140				180		
Albion BC	56' x 43' x 10'	2408	17.07 x 13.11 x 3.05		202	140				170	110	

LEVEL TWO FLOOR PLAN



LEVEL THREE

THE CHEDOKE BALLROOM

Offering up to 20,000 sq. ft. and elegantly appointed with crystal chandeliers, 25 foot ceilings and adjustable walls which provide maximum flexibility for conventions, conferences, meetings, breakout sessions, receptions, exhibits, galas and banquets.

WEBSTER BALLROOM + LOUNGE

Located on the third level. A uniquely versatile location suitable for a variety of events; the adjacent lounge overlooks the magnificent views of downtown Hamilton. Perfect for cocktail receptions and includes its own built-in private bar.

WEBSTER TERRACE

A perfect outdoor compliment to our Webster Ballroom + Lounge. Featuring mood lighting, stunning florals, bistro tables and chairs, and a beautiful view of downtown.

ROOM 314

Located on the third level and consists of 1330 sq. ft. suitable for meetings, breakout space, VIP receptions or the perfect green room.

LEVEL THREE ROOM CAPACITY + MEASUREMENTS

ROOM	MEASUREMENTS				MAX CAPACITY								
	IMPERIAL		METRIC		THEATRE	CLASS ROOM	HOLLOW SQUARE	U-SHAPE	BOARD ROOM	10 x 10 BOOTHS	MILITARY	ROUNDS OF 10	DINNER + DANCE
	DIM. (FT)	SQ. FT.	DIM. (M)	SQ. M.									
Chedoke ABC + Foyer	174' x 113' x 25'	19,662	53.04 x 34.44 x 7.62	1826.66	1681	1350				93	1681	1350	1140
Chedoke A	54' x 113' x 25'	6102	16.46 x 34.44 x 7.62	566.88	522	384				30	522	320	280
Chedoke B	60' x 113' x 25'	6780	18.29 x 34.44 x 7.62	629.91	406	384				30	406	320	300
Chedoke C	60' x 113' x 25'	6780	18.29 x 34.44 x 7.62	629.91	455	384				30	455	320	300
Chedoke AB	114' x 113' x 25'	12,882	34.74 x 34.44 x 7.62	1196.45	928	768				60	1200	900	650
Chedoke BC	120' x 113' x 25'	13,560	36.58 x 34.44 x 7.62	1259.77	861	816				60	1300	900	700
Room 314	35' x 38' x 10'	1330	10.67 x 11.58 x 3.05	123.56	168	84	36	26	30		168	50	60
Room 318	~35' x 38' x 10'	~1330	~10.67 x 11.58 x 3.05	~123.56	~168	~84	~36	~26	~30		~168	~50	~60
Webster ABC + Lounge	84' x 55' x 12'	4620	25.60 x 16.76 x 3.66	429.21	390	270				25		232	240
Webster A	28' x 55' x 12'	1540	8.53 x 16.76 x 3.66	143.07	131	96	44	38	46	8		80	
Webster B	29' x 55' x 12'	1595	8.84 x 16.76 x 3.66	148.18	134	100	44	38	46	8		80	
Webster C	27' x 55' x 12'	1485	8.23 x 16.76 x 3.66	137.96	125	72	44	38	46	7		80	
Webster AB	57' x 55' x 12'	3135	17.37 x 16.76 x 3.66	291.25	265	200				16		160	140
Webster BC	56' x 55' x 12'	3080	17.07 x 16.76 x 3.66	286.14	259	200				16		160	140

LEVEL THREE FLOOR PLAN

