



# FLOOR PLANS + CAPACITIES

HAMILTON  
CONVENTION  
CENTRE  
BY CARMEN'S



# LEVEL ONE

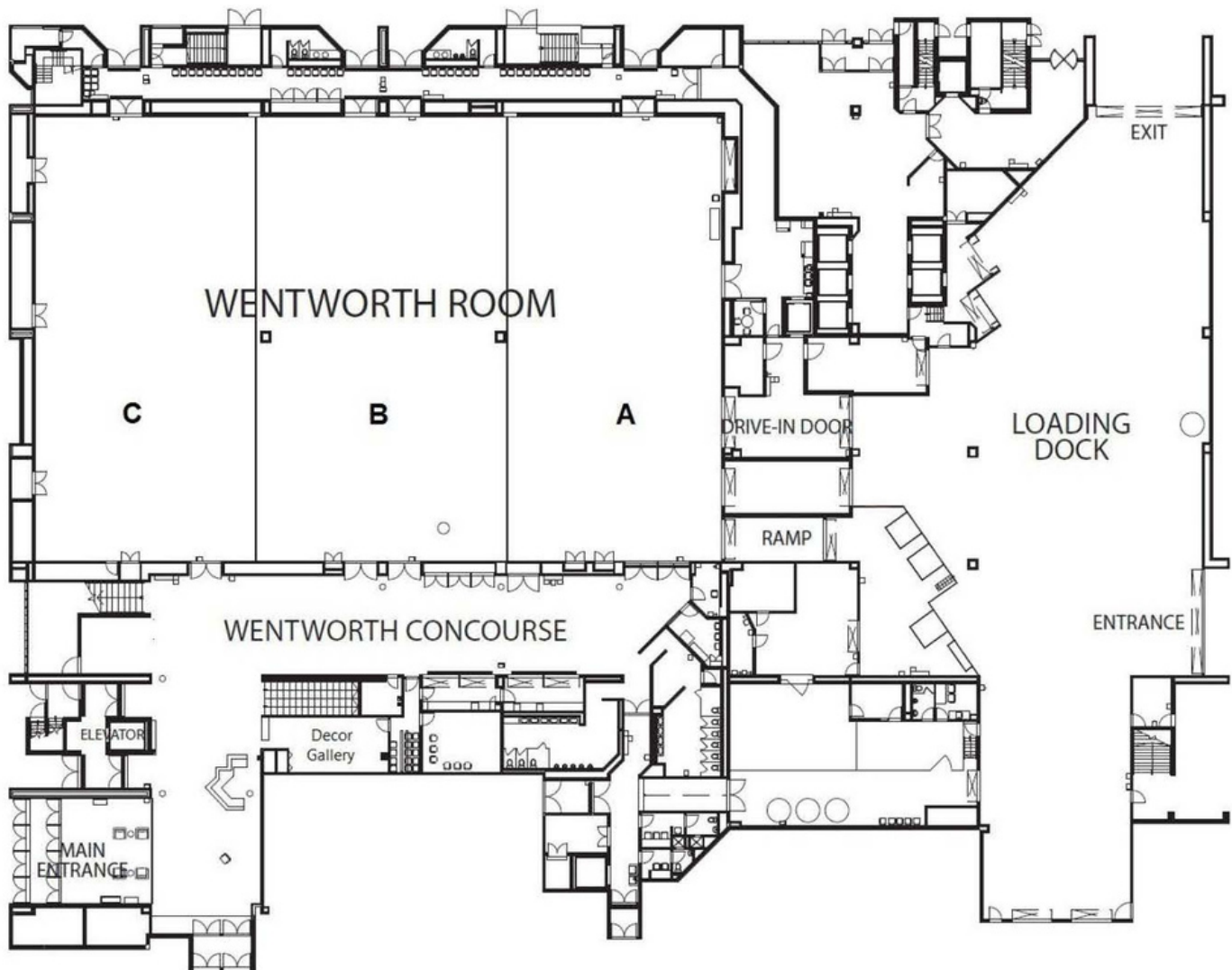
## THE WENTWORTH HALL

Located at street level, offering as much as 20,000 sq. ft. of reinforced floor space making it the ideal choice for exhibits, tradeshow, dinners, receptions and large meetings. The Wentworth Hall is connected to a four bay loading dock and includes a large freight elevator capable of transporting vehicles to the second and third level. Move-in and move-out times are greatly reduced with access to the Wentworth Hall via two sources; direct ramp from the loading dock and a large drivethrough door.

## LEVEL ONE ROOM CAPACITY + MEASUREMENTS

ROOM	MEASUREMENTS				MAX CAPACITY					
	IMPERIAL		METRIC		THEATRE	CLASS ROOM	10 x 10 BOOTHS	MILITARY	ROUNDS x 10	DINNER + DANCE
	DIM. (FT)	SQ. FT.	DIM. (M)	SQ. M.						
Wentworth ABC + Concourse	174' x 113' x 22'	19,662	53.04 x 34.44 x 6.71	1826.66	1540	1250	121	1944	1350	1140
Wentworth A	54' x 113' x 22'	6,102	16.46 x 34.44 x 6.71	566.89	480	360	39	606	400	280
Wentworth B	64' x 113' x 22'	7,232	19.51 x 34.44 x 6.71	671.87	560	408	38	707	400	330
Wentworth C	56' x 113' x 22'	6,328	17.07 x 34.44 x 6.71	587.89	500	360	39	631	400	280
Wentworth AB	118' x 113' x 22'	13,334	35.97 x 34.44 x 6.71	1238.77	1040	768	75	1313	900	650
Wentworth BC	120' x 113' x 22'	13,560	36.58 x 34.44 x 6.71	1259.77	1060	768	75	1338	900	700

# LEVEL ONE FLOOR PLAN





# LEVEL TWO

## THE ALBION BALLROOM

Featuring 4,000 sq. ft. with divider walls that can separate into three concurrent break out areas, each with its own private entrance.

## BREAK OUT ROOMS

Our second floor provides flexibility for meeting planners with the potential of eleven break out rooms.

## ROOM 201

Ideally suited as a trade show/convention office. A large picture window overlooks the Wentworth Hall and provided a birdseye view of the space. Simply draw the curtains and the room is instantly converted into a tasteful private meeting area.

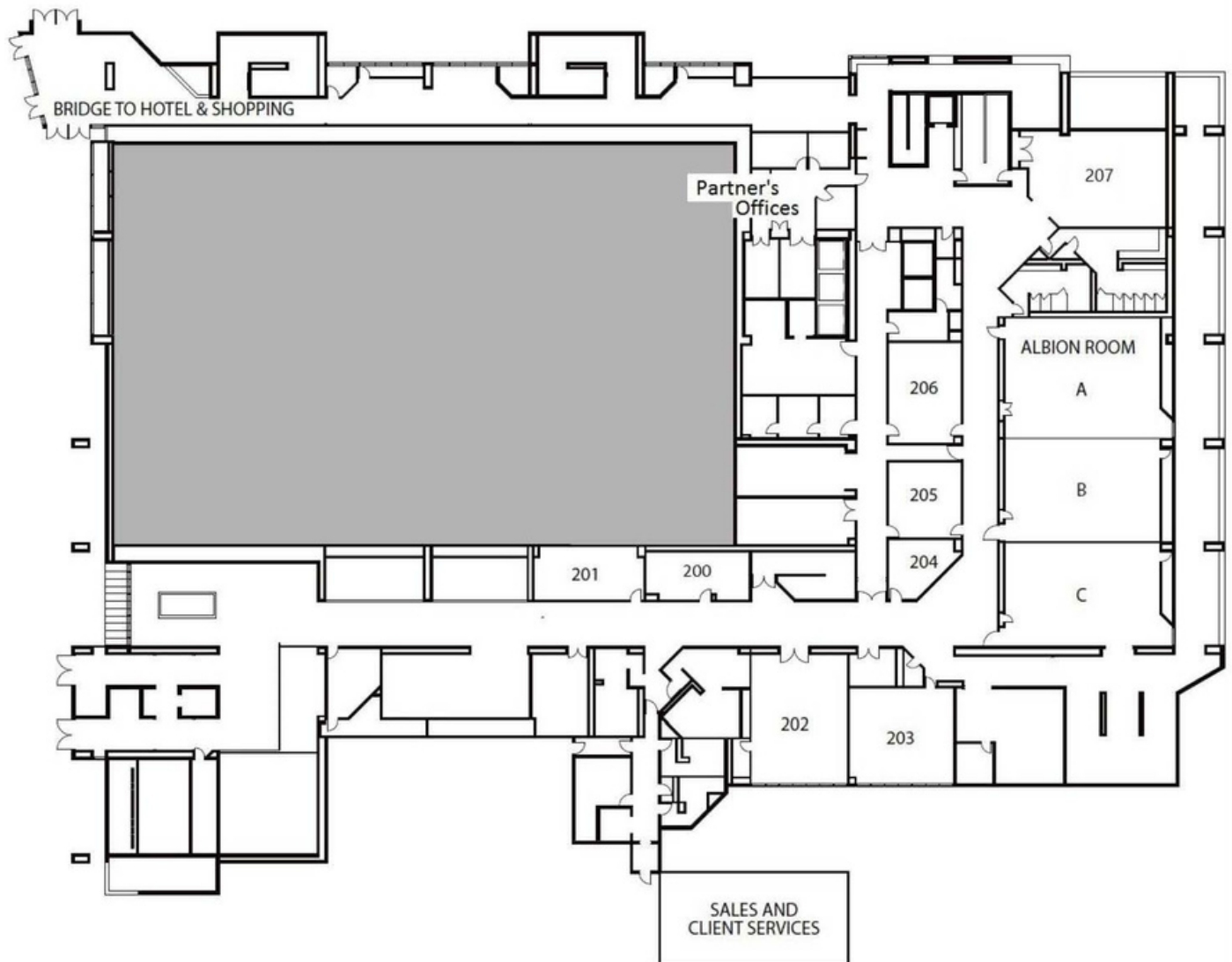
## SPACIOUS CORRIDORS

Ideally situated throughout the second level, overlooking the grand foyer or the stunning cityscape, any of these areas can be converted into unique reception space.

## LEVEL TWO ROOM CAPACITY + MEASUREMENTS

ROOM	MEASUREMENTS				MAX CAPACITY						
	IMPERIAL		METRIC		THEATRE	CLASS ROOM	HOLLOW SQUARE	U-SHAPE	BOARD ROOM	ROUNDS x 10	DINNER + DANCE
	DIM. (FT)	SQ. FT.	DIM. (M)	SQ. M.							
200	31' x 15' x 10'	465	9.45 x 4.57 x 3.05	43.20	48	30	22	19	18	30	
201	31' x 15' x 10'	465	9.45 x 4.57 x 3.05	43.20	48	30	22	19	18	30	
202	27' x 35' x 10'	945	8.23 x 10.67 x 3.05	87.80	80	50	30	24	24	50	40
203	30' x 26' x 10'	780	9.14 x 7.92 x 3.05	72.46	67	45	28	24	20	40	
204					15				8	10	
205	20' x 21' x 10'	420	6.10 x 6.40 x 3.05	39.02	40	18	20	16	14	30	
206	20' x 28' x 10'	560	6.10 x 8.53 x 3.05	52.03					14		
207	26' x 36' 7"10"	936	7.92 x 10.97 x 2.39	86.96	80	50	30	24	24	50	
Albion ABC	90' x 43' x 10'	3870	27.43 x 13.11 x 3.05	359.53	420	210				240	180
Albion A	34' x 43' x 10'	1462	10.36 x 13.11 x 3.05	135.82	120	80	34	30	34	90	
Albion B	29' x 43' x 10'	1247	8.84 x 13.11 x 3.05	115.85	105	80	34	30	34	90	
Albion C	27' x 43' x 10'	1161	8.23 x 13.11 x 3.05	107.86	96	80	34	30	34	80	
Albion AB	63' x 43' x 10'	2709	19.20 x 13.11 x 3.05	251.67	224	140				180	
Albion BC	56' x 43' x 10'	2408	17.07 x 13.11 x 3.05	223.71	200	140				170	110

# LEVEL TWO FLOOR PLAN





# LEVEL THREE

## THE CHEDOKE BALLROOM

Offering up to 20,000 sq. ft. and elegantly appointed with crystal chandeliers, 25 foot ceilings and adjustable walls which provide maximum flexibility for conventions, conferences, meetings, breakout sessions, receptions, exhibits, galas and banquets.

## WEBSTER BALLROOM + LOUNGE

Located on the third level. A uniquely versatile location suitable for a variety of events; the adjacent lounge overlooks the magnificent views of downtown Hamilton. Perfect for cocktail receptions and includes its own built-in private bar.

## WEBSTER TERRACE

A perfect outdoor compliment to our Webster Ballroom + Lounge. Featuring mood lighting, stunning florals, bistro tables and chairs, and a beautiful view of downtown.

## ROOM 314

Located on the third level and consists of 1330 sq. ft. suitable for meetings, breakout space, VIP receptions or the perfect green room.



# LEVEL THREE ROOM CAPACITY + MEASUREMENTS

ROOM	MEASUREMENTS				MAX CAPACITY								
	IMPERIAL		METRIC		THEATRE	CLASS ROOM	HOLLOW SQUARE	U-SHAPE	BOARD ROOM	10 x 10 BOOTHS	MILITARY	ROUNDS x 10	DINNER + DANCE
	DIM. (FT)	SQ. FT.	DIM. (M)	SQ. M.									
Chedoke ABC + Foyer	174' x 113' x 25'	19,662	53.04 x 34.44 x 7.62	1826.66	1541	1350				102	1946	1350	1140
Chedoke A	54' x 113' x 25'	6102	16.46 x 34.44 x 7.62	566.88	479	360				37	618	400	280
Chedoke B	60' x 113' x 25'	6780	18.29 x 34.44 x 7.62	629.91	520	408				37	611	400	300
Chedoke C	60' x 113' x 25'	6780	18.29 x 34.44 x 7.62	629.91	533	408				37	674	400	300
Chedoke AB	114' x 113' x 25'	12,882	34.74 x 34.44 x 7.62	1196.45	1000	768				64	1200	900	650
Chedoke BC	120' x 113' x 25'	13,560	36.58 x 34.44 x 7.62	1259.77	1053	816				74	1300	900	700
Room 314	35' x 38' x 10'	1330	10.67 x 11.58 x 3.05	123.56	125	85	36	26	30			100	60
Webster ABC + Lounge	84' x 55' x 12'	4620	25.60 x 16.76 x 3.66	429.21	525	270				25		280	240
Webster A	28' x 55' x 12'	1540	8.53 x 16.76 x 3.66	143.07	132	100	44	38	46	8		100	
Webster B	29' x 55' x 12'	1595	8.84 x 16.76 x 3.66	148.18	143	100	44	38	46	8		100	
Webster C	27' x 55' x 12'	1485	8.23 x 16.76 x 3.66	137.96	132	100	44	38	46	7		100	
Webster AB	57' x 55' x 12'	3135	17.37 x 16.76 x 3.66	291.25	275	200				16		200	
Webster BC	56' x 55' x 12'	3080	17.07 x 16.76 x 3.66	286.14	275	200				16		200	140

# LEVEL THREE FLOOR PLAN

